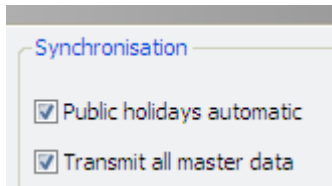


PDA Synchronisation

Detailed information is provided in the system documentation for software release 7.4.C in chapter 13 PC – PDA → PDA Synchronisation.

Settings under Extras

- Extras → Settings → PDA



- **Public holidays, automatic**
With the activation of each synchronisation of the PDA, all fittings are checked for public holiday changes.
- **Transmit all master data**
With the activation of each synchronisation of the PDA, the master data of **all** fittings of the client is transferred to the PDA. The third step of PDA synchronisation is then skipped (process as to date). If disabled, you can specifically select the master data transfer (for each fitting/door).

New synchronisation sequence

The new PDA synchronisation sequence includes the following steps:

- **Step 1: Automatic link between eLOCK Center and PDA**
After PDA synchronisation is called up it is automatically started and a link is established between eLOCK Center and the PDA and the data is transferred from eLOCK Mobile to eLOCK Center.
- **Step 2: Selection of the fittings jobs**
All fittings with fittings jobs are now displayed in the "Stock..." selection window. The function keys, e.g. [>] are used to move the fittings to the "Selection..." and to transfer them to the PDA during the further process.
- **Step 3: Selection of the master data (optional)**
In this step, the master data is selected, which is to be transmitted to the PDA in addition to the fittings jobs. This is necessary if autonomous PDA functions (e.g. read fitting events) are to be performed at the fitting. This step is excluded if "Transfer all master data" is selected under **Extras → Settings**.

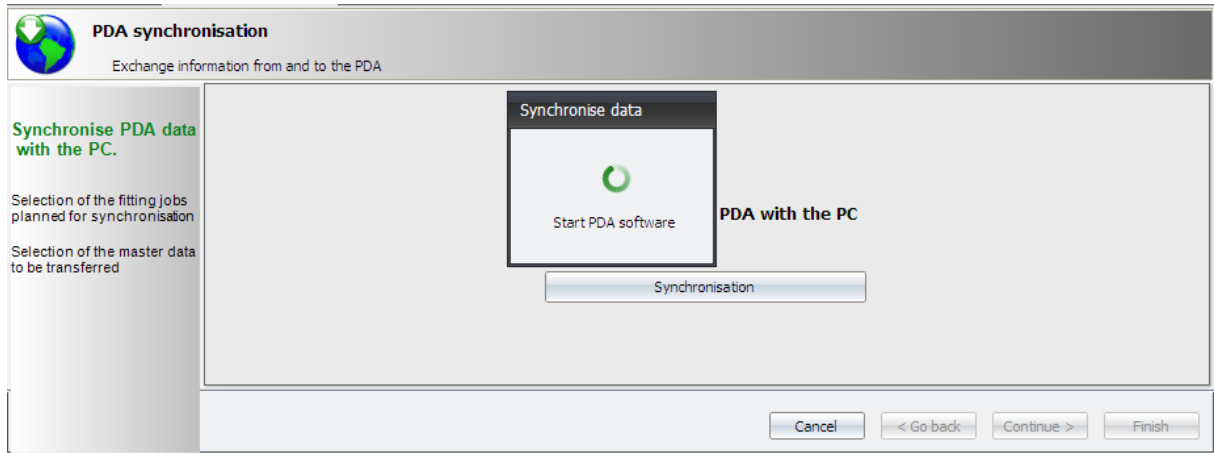


Figure 1: Step 1: Establish connection between eLOCK Center and the PDA

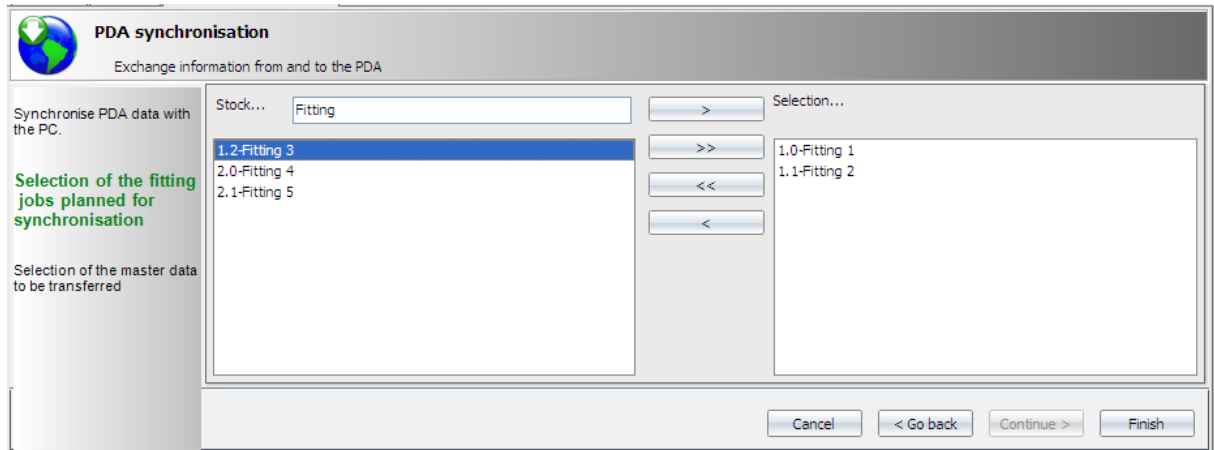


Figure 2: Step 2: Selection of the fittings (Jobs)

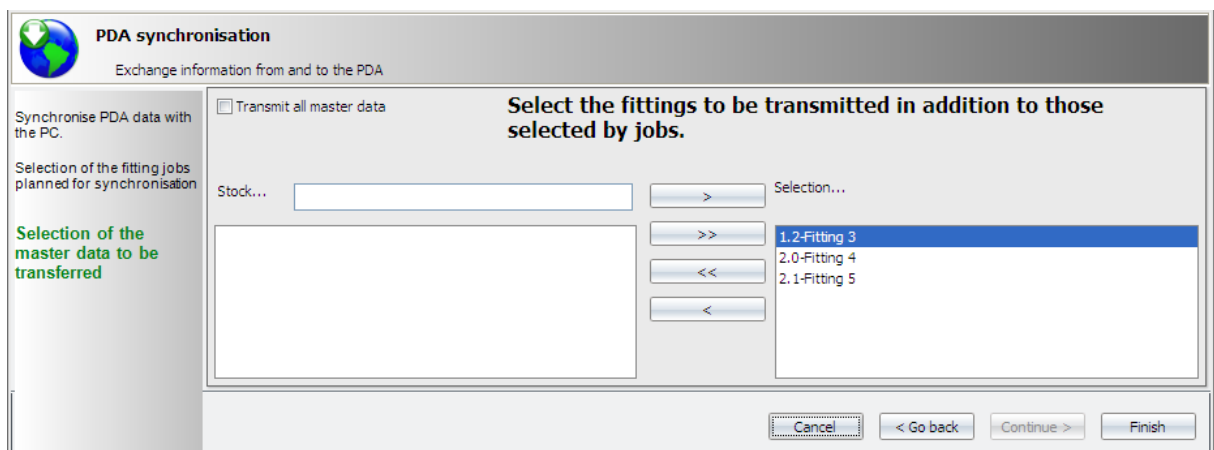


Figure 3: Step 3: Selection of the fittings (master data)

If "Transfer all master data" is activated, it is not necessary to make a selection using the function button [>>].