

eLOCK Mobile

Further information on eLOCK Mobile is provided in the system documentation for software release 7.4.C in Chapter 16 PDA – eLOCK Mobile.

New functions



Prerequisite for use of the new functions in eLOCK Mobile is the assignment of the respective system rights in eLOCK Center!

The procedure is described in the software system documentation in Chapter 07 Administration → System Rights.

o Status window

When the user performs a function in eLOCK Mobile, the following additional information is displayed to the user in the new status window:

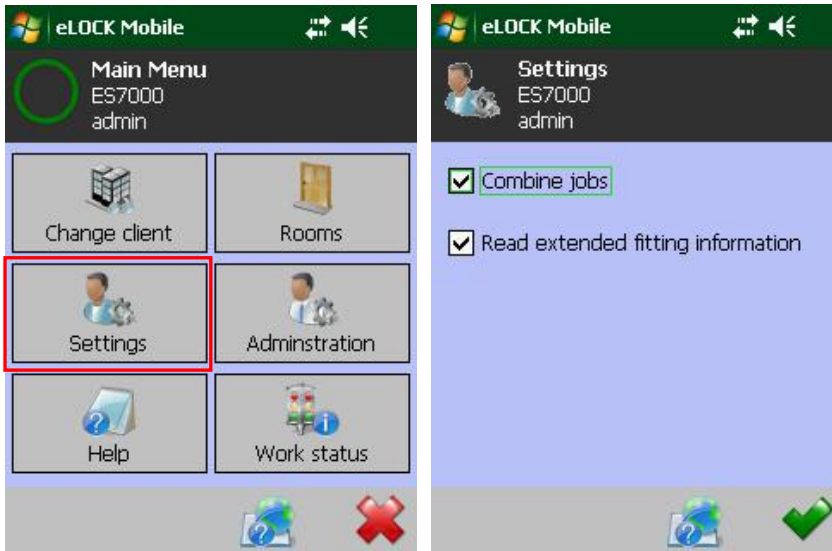
- **Top left:** Display of the current step (transfer or storage)
- **Top right:** Number of jobs done (for combined jobs) or commands performed (for one job) relative to the total number
- **Text in the middle:** Name of the current job or individual command with display of the command performed relative to the total number (in square brackets)
- **Process bar:** Graphic illustration of the "top right" display



○ User settings

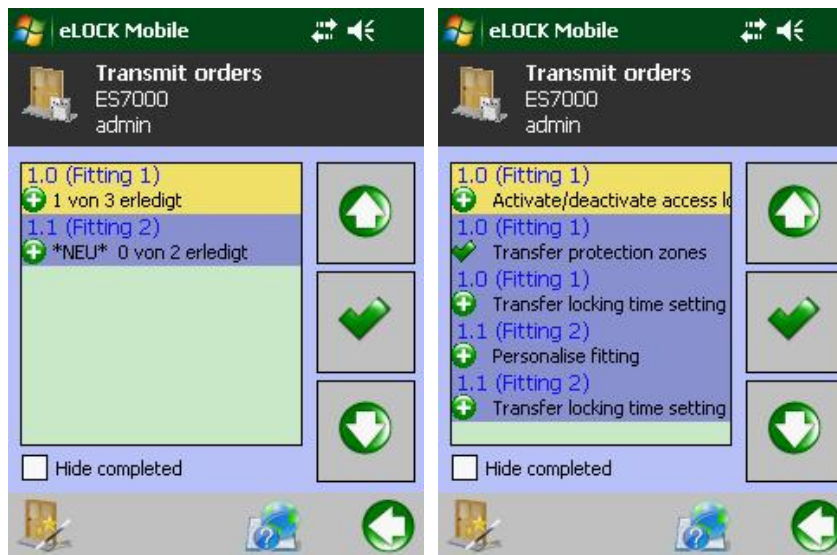
The following new functions in eLOCK Mobile can be enabled and disabled in the "Settings" menu item, "Main menu":

- Combine jobs
- Read extended fitting information



○ Combine jobs

If the combination is enabled, all fittings jobs in the "Transmit orders" menu are combined to form a single item. Instead of the job name, the number of jobs done relative to the total number is displayed. The jobs are done consecutively and stored individually. If an item contains a personalisation job, this is identified with *NEW*.



Jobs combined in an item

Jobs as individual items

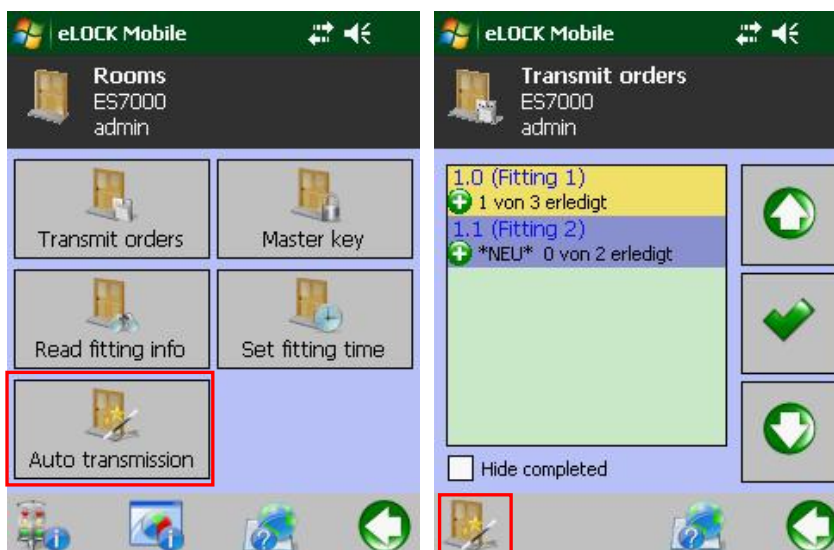
- **Read extended fitting information**

When the extended fitting information is read out, protection zones, time profiles and public holidays of the fitting are also displayed. The **protection zones** are listed by their numerical priority. The **time profiles** are displayed in an abbreviated form, weekdays not set are shown with a hyphen. The **public holidays** are displayed written out in full. The year is only saved for ES7000 fittings and is displayed in the fitting info. Therefore, public holidays can be transferred to the fitting for years other than the current year. In the case of ES5000 and ES5000plus fittings, the number of the current year is always displayed.



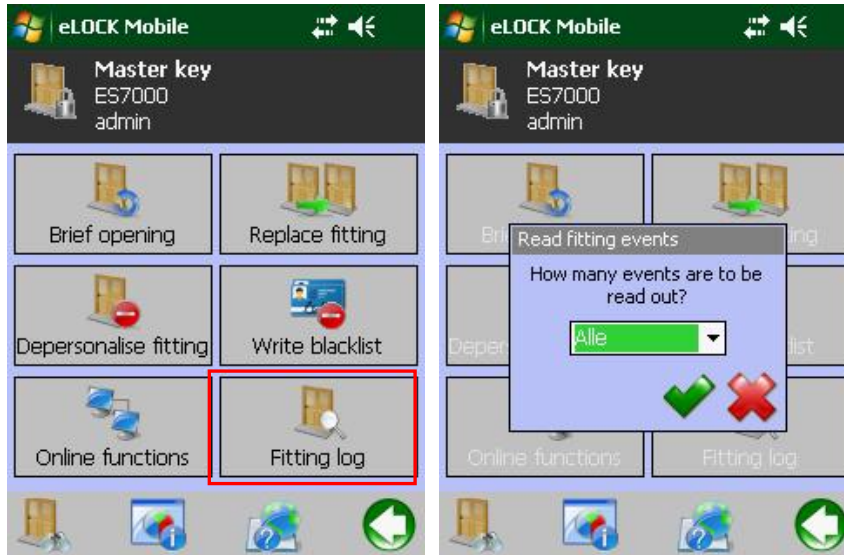
- **Auto-transmission**

The **"Auto-transmission"** function has been implemented in the **"Rooms"** menu. When the function is performed at the fitting, the fitting is first identified and checked to see whether outstanding jobs exist. If not, the user receives a message. If outstanding jobs exist, they are transferred consecutively and saved. The "Auto-transmission" function can also be performed directly in the **"Transfer jobs"** menu window.



- **Read fitting log**

The fitting logs (access log) can now also be read out directly from the PDA in the "Master key" menu. To do this, the number of events is selected and read out. The fitting events are displayed following synchronisation of the PDA in the standard "Access log" report in eLOCK Center.



- **Auto-login following synchronisation**

The direct jump to PIN input if there is only one client and one authorised user now also takes place directly following synchronisation of the PDA.

- **Correct incorrect personalisation jobs**

If an error occurs during the transfer of a personalisation job, the job is not set to "done" and remains in the "plus" status overview. It is not possible to repeat a personalisation job if the fitting has been personalised. If the fitting info is read out directly after transferring the job and the "personalised" item is displayed with yes, the personalisation job is set to "done".